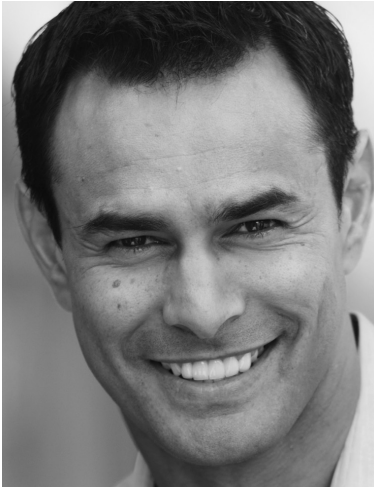


## **SCHOOL BOARD OF SARASOTA COUNTY**

Payment based on Table of Allowance Plan

Participating Dentists include Delta Dental Premier® and Delta Dental PPO<sup>SM</sup> dentists.

**(Enrollees are not required to visit a participating Delta Dental Dentist.)**



Visit our website for more information about Delta Dental dentists:  
[www.deltadentalins.com](http://www.deltadentalins.com)

## **HOW TO FIND A DELTA DENTAL DENTIST (AND SAVE MONEY!)**

Visit our online directory at: [www.deltadentalins.com](http://www.deltadentalins.com)

Select your plan network in the “Find a Dentist” box on the home page to search for Delta Dental dentists anywhere.

You can specify:

- The dentist network (Delta Dental Premier or Delta Dental PPO)
- Your state
- The dentist’s city and/or ZIP code (to broaden the search, you can also specify the number of miles you’re willing to travel)
- The dentist’s name (to find out if a specific dentist participates)
- The dentist’s specialty

Delta Dental’s online directory also provides a map and driving directions to the dental office by clicking on the office address.

### **How can seeing a Delta Dental dentist save you money?**

When you visit one of the Delta Dental network dental offices nationwide, your out-of-pocket expenses can be lower. Delta Dental dentists agree to fees determined by us. They also agree not to charge extra for services that should be included in the cost of treatment. Delta Dental dentists handle all claim forms and other paperwork for you free of charge. Because we pay network dentists directly, you are responsible only for your portion of the bill (coinsurance, deductibles, amount over the annual maximum and non-covered services).

### **Eligibility and benefits also available online**

Just log in by entering your user name and password in the designated boxes. If you do not have a user name and password, you’ll need to complete a quick one-time registration process. Click “Register Today” to begin.

### **Print an ID card**

An ID card is not required to visit a Delta Dental dentist; however, you may print one by logging in and following the prompts.

Delta Dental Insurance Company  
P.O. Box 1809  
Alpharetta, GA 30023-1809

Delta Dental’s Mission: To advance dental health and access through exceptional dental benefits service, technology and professional support.

Delta Dental includes these companies in these states:

Delta Dental of California – CA • Delta Dental of Pennsylvania – PA & MD • Delta Dental of West Virginia – WV • Delta Dental of Delaware – DE • Delta Dental of the District of Columbia – DC • Delta Dental of New York – NY • Delta Dental Insurance Company – AL, GA, FL, LA, MT, MS, NV, TX, UT